

B \flat Part

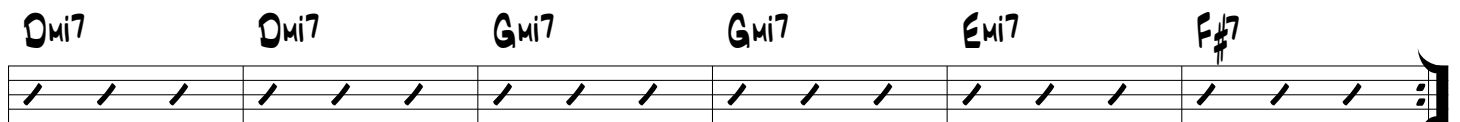
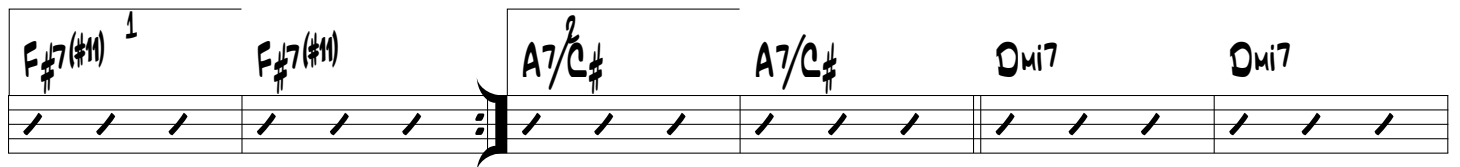
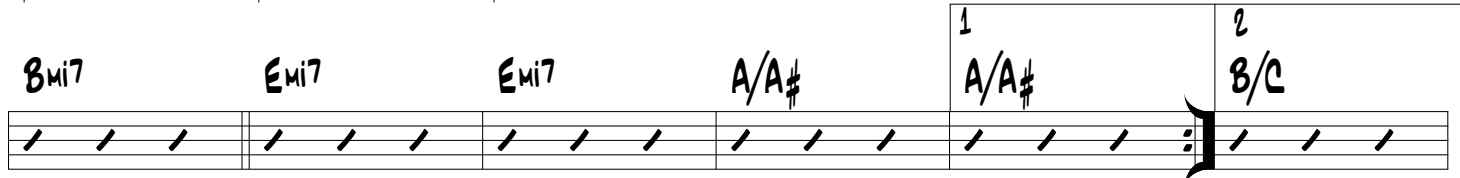
Smart Machine

Musical score for the B \flat part of "Smart Machine". The score is written in 3/4 time and consists of 12 staves. The first staff begins with a circled letter 'A' above the first measure. The second staff continues the melodic line. The third staff has a first ending bracket labeled '1' and a second ending bracket labeled '2'. The fourth staff begins with a circled letter 'B' above the first measure. The fifth staff has a four-measure bracket labeled '4' above the first measure and a circled letter 'C' above the fifth measure. The sixth staff contains a series of chords, with the instruction "(SIMILE CHORDS)" written above the first measure. The seventh staff has a circled letter 'D' above the fifth measure. The eighth staff has a circled letter 'E' above the fifth measure. The ninth staff has a circled letter 'F' above the fifth measure. The tenth staff has a circled letter 'G' above the fifth measure. The eleventh staff has a circled letter 'H' above the fifth measure. The twelfth staff continues the melodic line.

Smart Machine / Eb



SOLOS



D.C. AL CODA

